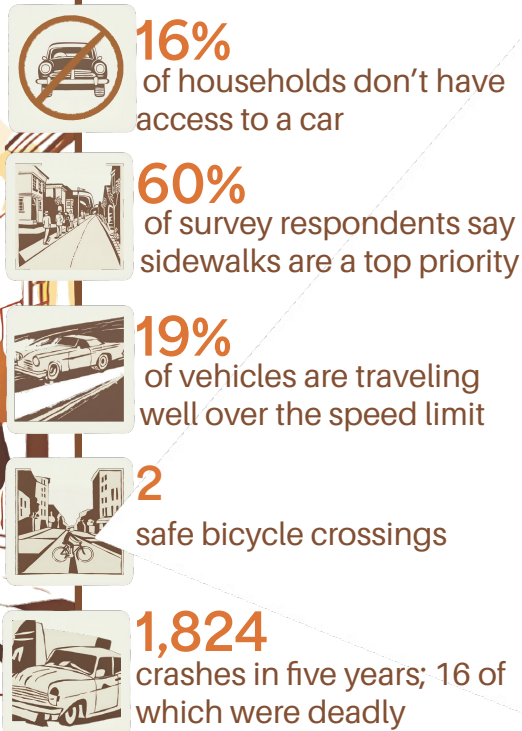


Reconnecting East Greensboro

A Plan to Reconnect People and Places Along US 29

Challenging a Legacy of Isolation

US Highway 29 on the east side of Greensboro conjures different ideas for different people: it connects interstate highways, moves over 50,000 cars and trucks every day, and has long created a barrier to safe travel, economic opportunity, access to green spaces, and reaching medical care for the thousands of people that live nearby. These communities are historic in many respects, being an original center of diversity in a city with a proud history of fighting economic and social injustices. **The City of Greensboro and its partners are applying to the Reconnecting Communities Pilot Program to create a community-driven plan to address the high levels of asthma, pollution, inadequate transportation options, and historical challenges created by a highway that doesn't offer safety to those who travel by car on it or connection with opportunities for those who have to cross it.**



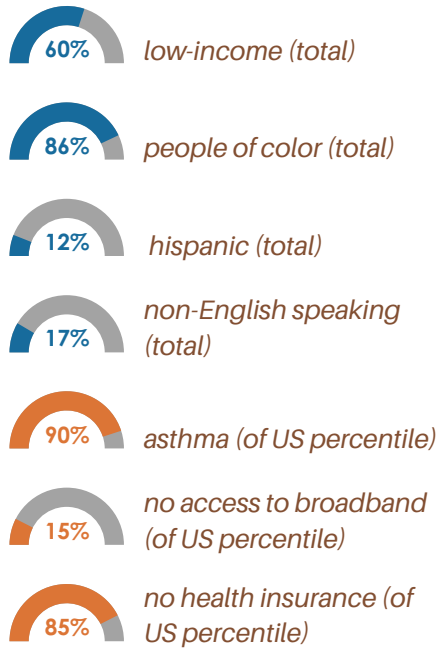
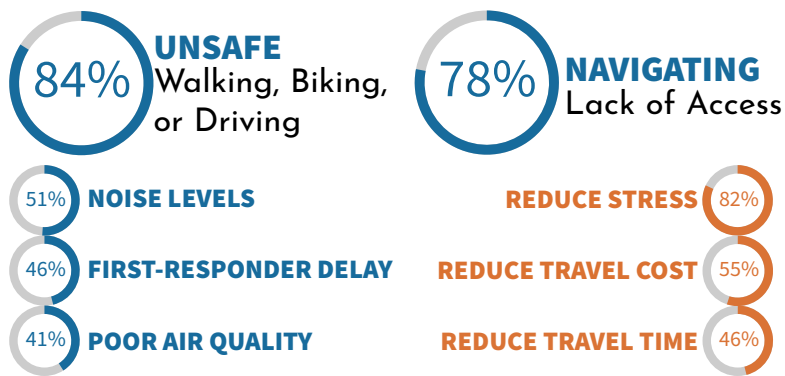
Our Study Area and Corridor

All the hospitals and all the higher-education institutions in and near the study area are located on the west side of US 29. There are only two full-service groceries in the study area, and all the greenways are also on the west side of the corridor. US 70 bisects the study area and makes parks hard to reach.



Our Corridor: People & Context

Over 1,100 people answered our call in 2023 for input into what this corridor and plan meant to them (below). The data (right) tell a story of both diversity and hardship.



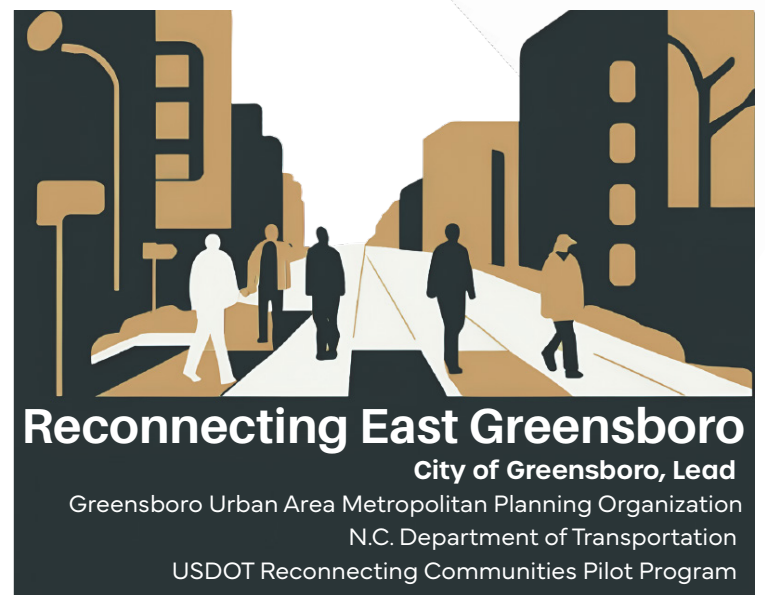
Response: We Can See a Way Forward from Here

What has happened before should inform future actions, but it doesn't have to predict them. **The City of Greensboro, our Metropolitan Planning Organization (GUAMPO), and NCDOT are committed to working with residents, students, business leaders, and travelers to make the US 29 Corridor safe, attractive to business and residents, and healthier.** We'll do this by creating a community-driven plan that asks people what's happening to them and how to find and prioritize answers. The result will be a conceptual design, tangible solutions, and agreed-upon performance standards committing the partners to progress the Plan's objective of reconnecting this vibrant community. Funding for 80% (\$520,000 of the Plan is being sought through the federal Reconnecting Communities Pilot Program with Greensboro and NCDOT contributing 20% (\$65,000 each).

How to Help Our City and East Greensboro Reconnect

Contact the following people saying how important a community-centered plan like **Reconnecting East Greensboro** is to you or your organization, referencing support for the Plan in the Reconnecting Community Pilot Program. It's easy and it makes a difference. **Mention disconnects from opportunities that US 29 has created, improving access across and along US 29 to jobs, education, parks, and medical care; increasing walking, biking, and transit use; and generating new investment opportunities.**

- Pete Buttigieg, Secretary of USDOT (e: comments@whitehouse.gov, t: 202.456-1111, or 1600 Pennsylvania Avenue NW, Washington, DC 20500)
- Kathy Manning, NC Representative 6th District (e: <https://manning.house.gov/contact>, t: 336.333.5005, or 100 S. Elm Street, Suite 301, Greensboro, NC 27401)



Reconnecting East Greensboro
 City of Greensboro, Lead
 Greensboro Urban Area Metropolitan Planning Organization
 N.C. Department of Transportation
 USDOT Reconnecting Communities Pilot Program